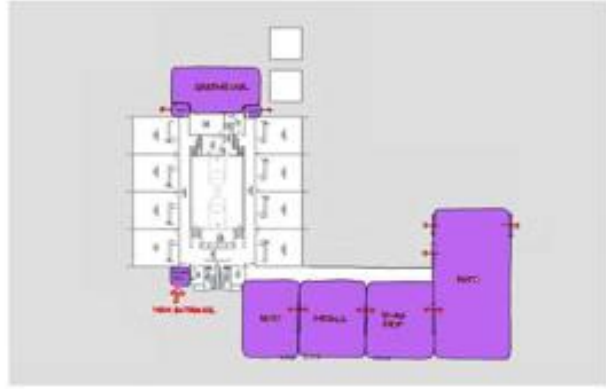


LAUREL PUBLIC SCHOOLS 20-YEAR MASTER PLAN



**GRAFF ADMINISTRATION/
COMMUNITY BUILDING** ①



**LHS CAREER AND TECHNICAL
CAMPUS** ②



WEST K-2 ELEMENTARY ③




MIDDLE SCHOOL ④




HIGH SCHOOL ⑤



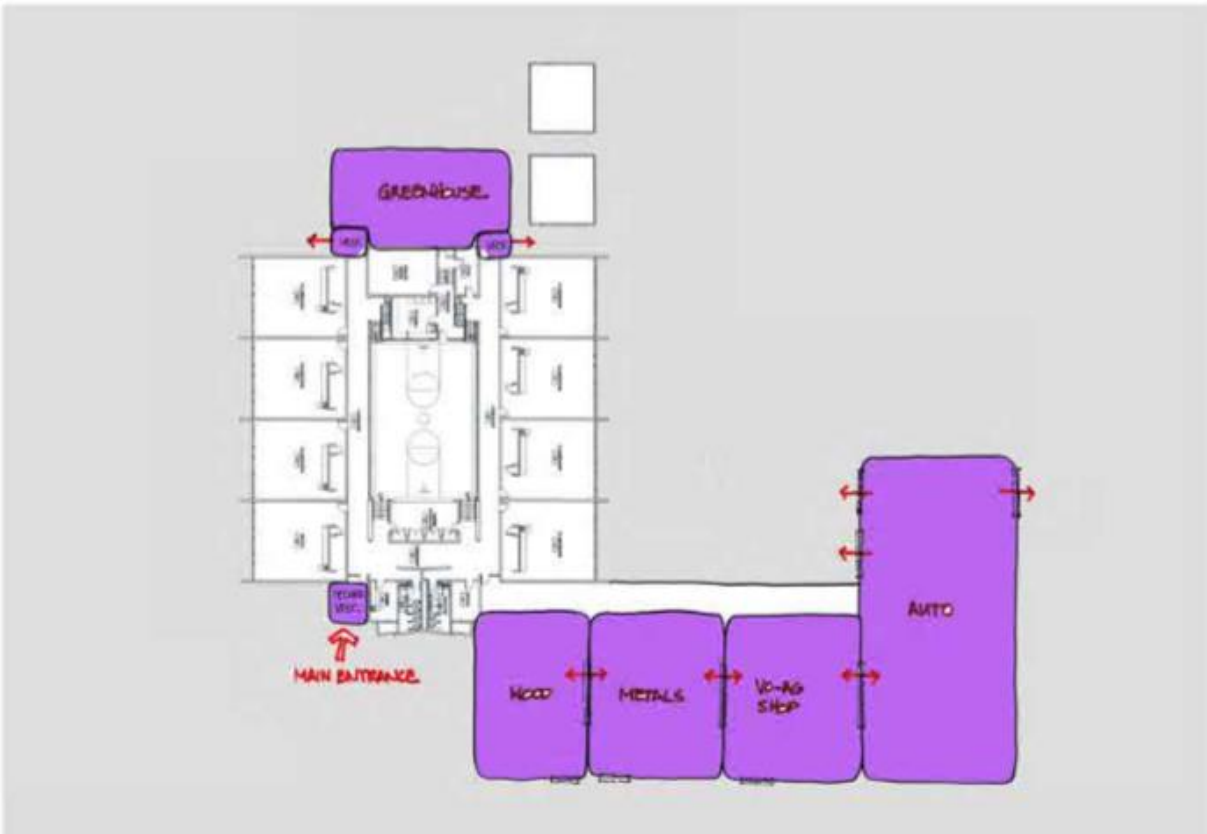
NEW 3-5 ELEMENTARY

 EXISTING/REMODEL

 NEW CONSTRUCTION

20-Year Master Plan Outline

In April 2016, the Board hired L'Heureux Page Werner as Educational Facility Consultants to work with the community in addressing current and future educational and facility needs. After six community meetings, a community survey, and numerous school level meetings, the Educational Facility Planning committee developed the following 20-year Master Plan. This comprehensive plan addresses overcrowding in all buildings, deferred maintenance in all buildings, and anticipated district and community growth to support delivery of a high quality educational experience for future generations of students.





LHS CAREER AND TECHNICAL
CAMPUS

South School becomes the Laurel High School Career and Technical Campus.



WEST K-2 ELEMENTARY

 EXISTING/REMODEL

 NEW CONSTRUCTION

West School becomes a K-2 elementary by remodeling and adding on additional classrooms and a gym.

DEFERRED MAINTENANCE IMPROVEMENTS:

- Site Improvement to Traffic Flow and Drainage
- Mechanical and Electrical Upgrades
- New Fire Sprinkler System
- ADA Upgrades



NEW 3-5 ELEMENTARY

Conceptual Drawing: Not Actual Building

A new 3-5 elementary school is built on 30.8 acres located just west of Yard Office road and north of Eleanor Roosevelt/8th Street. The Transportation Department will also be relocated to this site creating additional space at the High School. This site is also large enough to for another playing field for various activities. The design of the building would occur AFTER successful passage of the bond.



Proposed Site of New 3-5 School



MIDDLE SCHOOL



By removing 5th grade students from the Laurel Middle School, space is created to accommodate students in grades 6-8.

DEFERRED MAINTENANCE IMPROVEMENTS:

- Site Improvement to Traffic Flow and Drainage



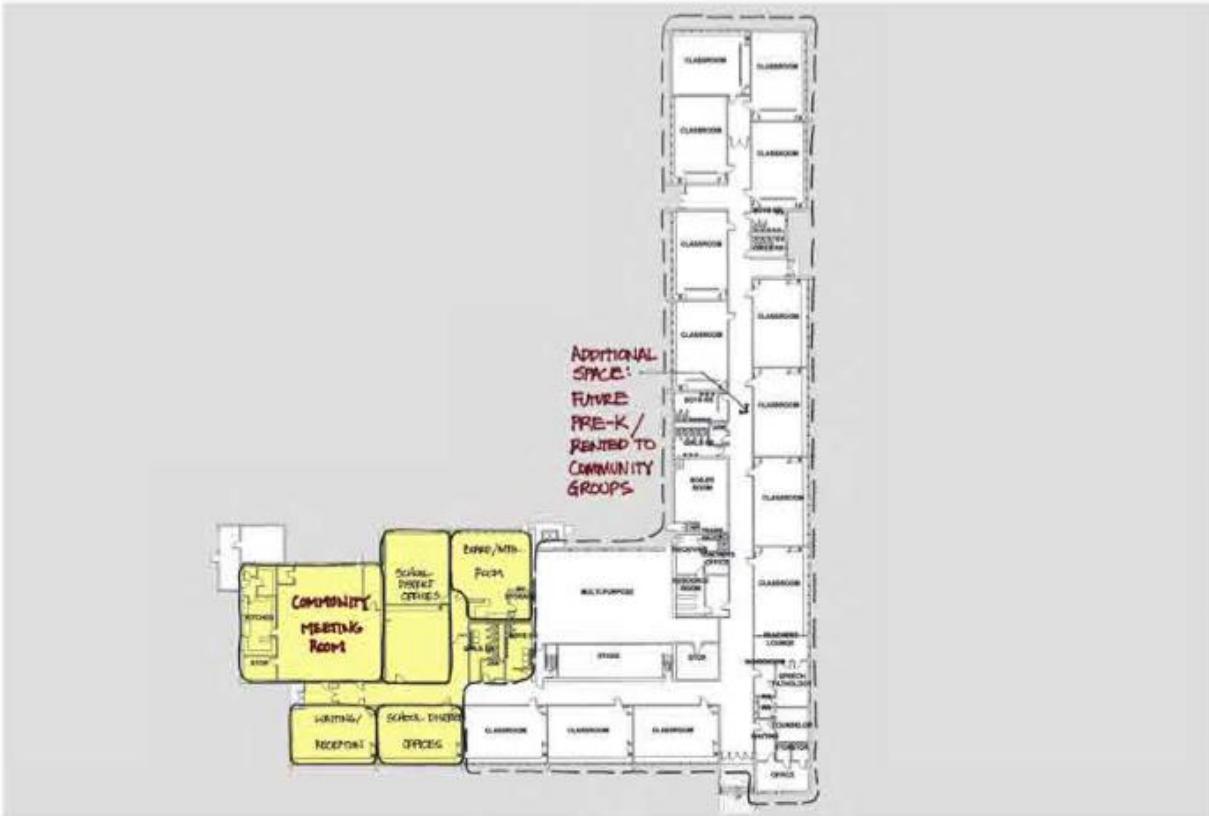
HIGH SCHOOL



Laurel High School would be remodeled to add in more classroom space. An auxiliary gym would provide additional classroom, school, and community use. By moving the Transportation Department to the new 3-5 school site, additional space is created to accommodate our growing high school needs.

DEFERRED MAINTENANCE IMPROVEMENTS:

- Mechanical and Electrical Upgrades
- Structural Upgrades
- ADA Upgrades



GRAFF ADMINISTRATION/ COMMUNITY BUILDING



EXISTING/REMODEL



NEW CONSTRUCTION

Graff School becomes the new District Office and Community Building. The current Administration Building would be sold.

DEFERRED MAINTENANCE IMPROVEMENTS:

- Mechanical and Electrical Upgrades
- Life Safety Upgrades
- ADA Upgrades
- Site Drainage Modifications